



# *Sustainable Ag* Catalog

# 2026

HELPING YOU GROW





## **Welcome to the Country Farm & Home Sustainable Agriculture Catalog!**

This catalog showcases a carefully curated selection of eco-friendly, sustainable growing supplies and the tools to get the job done. From organic certified amendments and soils to long-lasting seeding trays and natural pest control solutions, we have the essentials you need to steward and cultivate with the planet in mind. Whether you're nurturing a garden, managing your homestead, or farming full-time, our products are selected to promote healthier plants, better results, and a sustainable, local food chain. Keep in mind, only a small range of our full inventory is represented in this catalog – we have many more products to support every step of your growing journey.

**For pricing or specific product information**  
visit [chathamfarmsupply.com](https://chathamfarmsupply.com) or email [sales@chathamfarmsupply.com](mailto:sales@chathamfarmsupply.com)

### **Bulk Pricing**

Most products in 50 lb. bags qualify for a 5% discount when buying 10+ bags.

*Mix & Match similar products to reach the 10 bag discount!*

Full pallets qualify for a 10% discount.

Ton pricing is also available for some products.

*Pallets and by-the-ton purchases **cannot** be Mix & Matched.*

### ***A Special Note to Our Organic Certified Customers or Those Seeking Certification***

Although all the products in this catalog contain natural ingredients, it does not always mean they have been approved by a certifying agency. Please use caution when choosing inputs for your farm, and when in doubt, ask your certifier. If you are interested in certification but do not have a certifier yet, we recommend contacting the Carolina Farm Stewardship Association.

CFSA offers a free consulting service to help growers navigate through the world of getting certified. For more information, visit [carolinafarmstewards.org](https://carolinafarmstewards.org)



Want to stay up to date with news, seasonal & group orders, community events, and more?  
**Subscribe to our newsletter by scanning the green QR code!**



Get real-time updates and see what we're up to by following us on Instagram!  
**@country\_farm\_home**

Visit us online!  
[ChathamFarmSupply.com](https://ChathamFarmSupply.com)



# Table of Contents

<b>Fertility &amp; Lime.....</b>	<b>1</b>
Multi-Purpose Fertilizers.....	1
Nitrogen Sources.....	3
Phosphorous Sources.....	4
Potassium Sources.....	4
Liquid Fertilizers.....	5
<b>Amendments.....</b>	<b>7</b>
Micronutrients, Minerals, Soil Conditioners, and Acidifiers.....	7
Biological Amendments.....	8
<b>Pest &amp; Disease Management.....</b>	<b>9</b>
<b>Crop Protection &amp; Season Extension.....</b>	<b>14</b>
Weed Control and Ground Covers.....	14
Trellising and Staking.....	14
Row Cover & Shade Cloth.....	15
Supports & Accessories.....	16
Greenhouse Supplies.....	16
<b>Food &amp; Produce Packaging.....</b>	<b>17</b>
<b>Soils, Composts, &amp; Growing Mediums.....</b>	<b>18</b>
Bagged Soils.....	18
Composts.....	19
Growing Media & Amendments.....	20
<b>Cover Crop Seed.....</b>	<b>22</b>
Cool Season Cover Crops.....	22
Warm Season Cover Crops.....	23
<b>Seed Trays &amp; Propagation Supplies.....</b>	<b>24</b>
<b>Drip Tape &amp; Irrigation.....</b>	<b>25</b>
Drip Tape Fittings.....	25
½" Line Fittings.....	25
¾" Line Fittings.....	26
1" Line Fittings.....	26
Microfittings & Emitters.....	27
Miscellaneous Repair & Maintenance.....	27

# Fertility & Lime

## Multi-Purpose Fertilizers

### **Alfalfa Meal OG (3-2-2)** 50 lb. **NOP**

Slow-release soil conditioner; increases microbial activity. An organic amendment containing loads of essential minerals and micronutrients for a wide variety of crops; a fantastic activator for soil microbial activity and overall soil health!

### **Neptune's Harvest Crab & Lobster Shell (5-3-0)** 4 lb. **OMRI**

An excellent dry organic source of nutrients, including Calcium (17%) and Magnesium (1%). It retains moisture in the soil, builds organic matter, and creates deeper roots. High in Chitin, which promotes the growth of Chitin-eating bacteria in the soil. Helps eliminate Ants, Grubs, Fungus & Root Nematodes, due to being Chitin based in structure.

### **North American Kelp Meal** 10 lb., 50 lb. **NOP**

Harvested from clean Northern Canadian waters. Slow release; improves soil texture & fertility; 10-20 lb./1000 sq. ft., 400-800 lb./acre for field crops. As an animal supplement, mix as 1-2% of the feed ration or feed free choice.

### **BioGreaux Crab Flake Meal (4-4-0, 18% Cal)** 40 lb. **NOP**

Feeds microbes in the soil to aid in combatting soil pathogens and predatory nematodes, resulting in healthier plants, more vigorous growth, and better yields. Crab shell meal helps stimulate a diverse microbiome and provide plants with the Nitrogen, Phosphorus, and Calcium to succeed and proliferate throughout the growing season.

### **Coast of Maine Lobster Meal (6-2-0, 8% Cal)** 4 lb. **OMRI**

Lobster Meal is a unique single-ingredient fertilizer, high in both natural nitrogen and calcium to help promote strong stem growth, healthy green foliage and a vigorous root system. It is made of ground, dehydrated lobster, with some crab shell mixed in. It can be mixed into the soil of new beds, placed in planting holes or used to top dress existing garden beds, container gardens, houseplants and lawns. It can also be used as a compost bio-activator. An added benefit of lobster is that it is naturally high in chitin, which when in the soil releases an enzyme that deters many insects. Feeding directions can be found on Coast of Maine.com.

### **True Tomato and Vegetable (4-5-6)** 12 lb. **OMRI**

Seabird guano, shrimp shell & crab shell meal, poultry manure, soybean meal blended at a rate ideal for fruiting vegetables- New retail option brought to you by the CA company responsible for fertilizing much of the West Coast's USDA organic commercial crops.

### **Espoma Bio-Tone Starter Plus (4-3-3)** 4 lb.

A natural slow-release fertilizer for all vegetables and herbs. Loaded with Bio-Tone beneficial microbes, humates and other safe and natural ingredients to feed your plants and fight off disease throughout the season.

### **Espoma Garden Food (10-10-10)** 6.75 lb.

is a high-quality, all-purpose fertilizer designed for agricultural use. It delivers the three essential nutrients for plants: nitrogen, phosphorus, and potassium. True to all Espoma products, it contains no sludges or fillers.

### **FoxFarm's Happy Frog Acid Loving Plants Fertilizer (4-5-3)** 4 lb. **OMRI**

Specifically formulated for use on azaleas, rhododendrons, camellias, hydrangeas, evergreens, blueberries, raspberries, strawberries, and all other acid loving plants, this blend of fertilizers and microorganisms delivers nutrition where your plants need it most. Mycorrhizal fungi are included to help increase root efficiency, which may enhance nutrient uptake and water absorption.

### **FoxFarm's Happy Frog All Purpose Fertilizer (6-4-5)** 4 lb. **OMRI**

Happy Frog® All-Purpose is a ready-to-use blend of fertilizers and soil microbes. Mycorrhizal fungi are included to help increase root efficiency, which may enhance nutrient uptake and water absorption. Recommended for vegetable gardens, annual and perennial flower gardens, ornamental plantings, and all types of container gardening.

### **FoxFarm's Citrus & Avocado Fertilizer (7-3-3) 4 lb. OMRI**

This formula contains nitrogen for robust vegetative growth, as well as calcium and sulfur to address the needs of these citrus trees. Mycorrhizal fungi are included to help increase root efficiency, which may enhance nutrient uptake and water absorption. Feeding rates on foxfarm.com.

### **FoxFarm's Happy Frog Fruit & Flower (4-9-3) 4 lb. OMRI**

This formula contains premium ingredients like bat guano, kelp meal, bone meal, feather meal, and beneficial microbes with a guaranteed analysis on microbial colonies and concentrations. We have used this product on both raised beds here and on home gardens with remarkable success and give the Foxfarm line a solid green thumbs up! Foxfarm recommends feeding monthly through harvest time, ½ cup for every 2 feet of plant height.

### **FoxFarm's Happy Frog Jump Start Fertilizer (3-4-3) 4 lb. OMRI**

Formulated for use on transplanted seedlings and re-potted container plants. This proprietary mix of fertilizers supplies phosphorus, a nutrient necessary for the early stages of plant growth. It also contains calcium which may help build stronger cell walls and boost the plant's ability to resist disease. Mycorrhizal fungi are included to help increase root efficiency, which may enhance nutrient uptake and water absorption. Feeding rates available on foxfarm.com.

### **FoxFarm's Happy Frog Tomato & Vegetable (5-7-3) 4 lb. OMRI**

Contains premium ingredients like bat guano, kelp, alfalfa meal, fish meal, and naturally occurring organic material. Foxfarm products provide a guaranteed analysis on microbial colonies and concentrations. We have used this product on both raised beds here and on home gardens with remarkable success and give the Foxfarm line a solid green thumbs up! Foxfarm recommends feeding monthly through harvest time, 2-3 cups per 10 sq' depending on crop. Recommended rates per crop are on the bag.

### **Harmony Ag Organic Fertilizer (5-4-3) 40 lb. OMRI**

Slow release; made from all natural poultry manure; 1% water soluble. N, 4% water insoluble. N, 4% P<sub>2</sub>O<sub>3</sub>, 3% K<sub>2</sub>O, 9% calcium, .08% magnesium, 0.2% iron. We keep several ton pallets of bagged Harmony in stock, but we do not stock ton totes at this time. Totes are special ordered when we pull in our truckloads of Harmony.

### **Nature Safe Pelletized Fertilizers (8-5-5 | 10-2-8) 50 lb. OMRI**

#### **8-5-5**

Pelleted all-purpose general organic fertilizer containing 1.2% water-soluble Nitrogen for quick greening and 6.8% slow release Nitrogen for nutrition lasting up to 8 weeks. Derived from meat meal, bone meal, feather meal, bone meal, blood meal and Sulphate of Potash.

#### **10-2-8**

Derived from meat meal, bone meal, feather meal, bone meal, blood meal and Sulphate of Potash, this organic fertilizer offers 1% water-soluble Nitrogen for fast-acting greening and 9% slow-release Nitrogen for nutrition lasting up to 8 weeks.

### **Seven Springs Starter Fertilizer (9-2-2) 50 lb. NOP**

This fertilizer gives seedlings and young plants a jumpstart with high quality, bioavailable nutrients. This starter fertilizer is made specifically to develop strong, steady, healthy plants and the moderate release formula ensures a quick start without burning roots or plants. Ingredients include composted poultry manure, feather meal, sodium nitrate, volcanic ash, kelp meal, and humic acid, which are all compliant with the National Organic Program standards.

### **Seven Springs High Tunnel Fertilizer (4-1-4) 50 lb. NOP**

This Seven Springs Farm Supply fertilizer blend is crafted to provide all necessary nutrition to intensely growing vegetable crops, while also maintaining the soil's nutrient balance and biology. Great for use in high turnover, high production plantings, especially those in high tunnels. Ingredients include alfalfa meal, composted poultry manure, feather meal, sodium nitrate, potassium sulfate, langbeinite, wollastonite, gypsum, volcanic ash, kelp meal, and humic acid, which are all compliant with the National Organic Program standards.

## Seven Springs All-Purpose Fertilizer (7-6-7) 50 lb. **NOP**

This all-natural premium all purpose blend fertilizer! This fertilizer is a balanced blend of top tier, biology-building nutrients, also containing humates and trace minerals. Use at planting and mid-season for plants and soils that need a balanced fertilizer. Ingredients include feather meal, meat and bone meal, blood meal, potassium sulfate, volcanic ash, kelp meal, and humic acid, which are all compliant with the National Organic Program standards.

## Seven Springs Neversink Fertilizer (6-1-7) 50 lb. **NOP**

This fertilizer formula was created by Neversink Farm's owner to maintain the farm's demanding, fast-paced vegetable production. Ingredients include alfalfa meal, feather meal, fish meal, potassium sulfate, kelp meal, and biochar, which are all compliant with the National Organic Program standards.



## Seven Springs Tree, Vine, & Berry Fertilizer (4-5-4) 50 lb. **NOP**

This Seven Springs Farm Supply's fertilizer is formulated to fuel strong, healthy root system growth and give trees, vining fruits, and other perennials the boost they need to recover after fruits ripen. Ingredients include composted poultry manure, meat and bone meal, feather meal, blood meal, rock phosphate, potassium sulfate, volcanic ash, kelp meal, and humic acid, which are all compliant with the National Organic Program standards.

## **Nitrogen Sources**

### **Sodium Nitrate AllGanic Soluble (15-0-2) 50 lb. **OMRI****

A completely water-soluble micropelletized fertilizer great for fertigating. Readily bioavailable for nutrient uptake and a great source of fast-acting nitrogen. Can burn plants in foliar applications. Not recommended as a spray, but works great in fertigation applications.

### **Blood Meal from Poultry or Porcine (12-0-0) 50 lb. **NOP****

An excellent source of readily-available Nitrogen which contributes to vibrant green growth and plant vigor. This amendment is ideal for highly Nitrogen-requiring crops like corn, leafy greens, brassicas, peppers & tomatoes etc. Works as a fantastic activator for compost bins/piles. Intended to be applied to beds and planting areas prior to planting. Feeds plants for up to 6 weeks.

### **Nature Safe Pelletized Feather Meal (13-0-0) 50 lb. **OMR****

A coarse-granulated organic fertilizer derived from meat meal, feather meal, and blood meal. Provides .96% soluble Nitrogen for fast-acting greening and 12.04% slow-release Nitrogen for nutrition lasting up to 10 weeks.

### **Feather Meal 50 lb.**

Slow release w/ low water solubility; nitrogen becomes available through microbial activity; 200-250 lb. per acre. We source feathermeal sold as a feed additive, so it does not have an N-P-K label. The most recent analysis we ran on a batch was 14-0-0. It typically runs 12-13% nitrogen, so we recommend using this figure when making calculations for your crops. **Are you organic certified?** Although our feathermeal is not certified, we can provide a flowchart of the hydrolization process used at Tyson's rendering plant. Contact [deliveries@chathamfarmsupply.com](mailto:deliveries@chathamfarmsupply.com) for more details.

### **Yaraliva Tropicote Calcium Nitrate (15.5-0-0, 19% Cal) 50 lb.**

Sodium and chloride-free source of nitrogen that delivers fast acting growth, greening and prolonged resistance to environmental stressors. *Not approved for organic farming.*



## **Phosphorous Sources**

### **Blacksmith BioScience MegaPhos Microbe** 1 lb. **OMRI**

Use this phosphorus solubilizer to unlock the bioavailability of phosphorus already in your soil and/or when amending your soil with phosphorus. Active ingredient *Bacillus megaterium* strain HM87. Labeled for use in most produce, forage, lawn and turf crops.

### **Bone Meal (2-14-0)** 50 lb. **OMRI**

Made from steamed bone meal. Ideal for new plots and beds to incorporate immediate Phosphorus and high Calcium (20%) into the soil profile.

### **Fish Bone Meal(4-14-0)** 50 lb. **NOP**

An exceptional alternative to steamed bone meal. This organic amendment is made from flash-dried bones of saltwater whitefish. Containing just as much Phosphorus as the livestock-derived bone meal as well as 17% Calcium and a bit of Nitrogen, this fertilizer is fantastic for starting new plots and beds. This product is more finely ground than our bone meal and is therefore an excellent phosphorus amendment if you are mixing your own soil for transplants.

### **Foxfarm's Happy Frog Cavern Culture, Bat Guano (0-5-0)** 4 lb.

High phosphorous bat guano with active microbes. Bat guano is especially good for spectacular flowers and multiple bud development. m2-3 cups per 10 sq.ft. Top dress early spring and once in late fall or at the first sign of bud development.

### **Rock Phosphate Ida-Gro Pelletized (0-3-0)** 50 lb. **OMRI**

A naturally-mined source of phosphorus and calcium great for trees, shrubs, row crops, field crops, fruits & vegetables. Recommended to amend soil before planting. Use with MegaPhos SP microbes.

### **Seabird Guano (0-11-0, 22% Cal)** 44 lb. **OMRI**

Fast-acting high phosphate levels with significant additional calcium. Can be used as a top dressing by drip irrigation for readily bioavailable phosphorus/calcium in row crops, raised beds, flower & shrub beds and fruit tree orchards. For use in transplant mix in soil: 1tsp. per gal of soil mix/growing medium. For top dressing: 1tsp. per gal. of soil. For tea: 2Tb. per gal. into a fine mesh bag, never loose.

## **Potassium Sources**

### **Potassium Sulfate Granular (0-0-50, 17% Sulfur)** 50 lb. **OMRI**

*Use with alkaline soils – will lower pH.* Naturally occurring, mined product. This is a soluble SOP for crop production. It is best to apply according to your soil test or crop requirements.

### **Diamond K Potassium Sulfate Soluble (0-0-50, 17% Sulfur)** 50 lb. **OMRI**

*Use with alkaline soils – will lower pH.* Suitable for using in drip irrigation systems or for float-irrigation. Naturally occurring, mined product. Apply based on tissue analysis, soil test reports or known crop demand; general rate to apply without previously listed info may be 1 lb./1000 sq. ft.

### **Sunflower Hull Ash (0-4-34)** 50 lb. **OMRI** 40 Bags/Pallet

A soil pH-neutralizing fertilizer derived from a renewable resource containing rich levels of Potassium and a boost of phosphorus beloved by annual and perennial flowers. Suggested for use in soils with a pH of 6 or lower and not recommended for acid-loving plants.

## **Liquid Fertilizers**

### **Aqua Power (5-1-1) 1 Gallon OMRI**

Concentrated liquid fish emulsion filtered through an 80 mesh screen. The nitrogen in Aqua Power™ is water soluble and immediately bioavailable to plants. Mix with Maxicrop Soluble Seaweed powder to make your own blend of Fish & Seaweed. Shake well before use.

### **Bio Link Liquid Potassium (0-0-6) 2.5 Gal. OMRI**

liquid fertilizer containing 6.0% soluble potash derived from sulfate of potash (potassium sulfate). It works great as a foliar spray or in fertigation to correct potassium deficiencies or incorporated into your fertility plan. Potassium is an essential nutrient for vigorous root systems, plant growth and disease resistance, and fruit & vegetable quality.

### **Brown's Fish Fertilizer (2-3-1) 1 Gal. OMRI**

Produced in Western North Carolina as a byproduct of a freshwater trout farm. Brown's is a fish hydrolysate and is produced using a cold process so that it contains all the nutrients, vitamins, enzymes and natural growth hormones. It is filtered down to 120 mesh and can be used in drip line systems. Phosphoric acid is used as a pH stabilizer and as a source of phosphorus that plants need.

### **Monterey Liquid Fish and Guano Fertilizer (9-6-2) 1 qt.**

Use as a foliar feed or as a soil drench. Maximum Coverage: 16,000 Sq. Ft.

Provides vigorous growth for indoor/outdoor plants, trees, shrubs, fruits and vegetables.

### **Medina HastaGro Plant (6-12-6) 1 Gal.**

A natural plant and microbial food ideal for drip irrigation. Can also be foliar fed. Contains high-quality N-P-K plant food complexed with humic and fulvic acids, Medina Soil Activator to stimulate biological activity, and seaweed extracts and sugars to stimulate fruiting and blooming. Nitrogen is derived from clean urea sources.

### **Medina Molasses Soil Stimulator 1 Gal.**

Liquid molasses great for composting teas or mixing with your other liquid fertilizers to feed soil microbes.

### **True Organics (4-1-3) Bulk Fish Fertilizer By the Gallon OMRI**

Fish and molasses blend uniquely formulated for organic fruit and vegetable production; this is the stuff used by many large commercial organic growers in CA. As a liquid fertilizer, True has an edge over other fish products in its ability to maintain an even consistency rather than clumping or settling. It runs through a drip system cleaner than other fish products. Sold in bulk; bring your own container or purchase a container from us.

### **FoxFarm Grow Big (6-4-4 | 1-0-0) 32 oz.**

These two special brews are designed to enhance plant size and structure, allowing for more abundant fruit, flower and bud development. It is formulated with a low pH to maintain stability in storage and keep micronutrients available. Feeding rates are available at [www.foxfarm.com](http://www.foxfarm.com). Be careful you choose the correct bottle in the store – for soil planting or hydroponics – we carry both!

#### **Grow Big Liquid Plant Food (6-4-4)**

Supports prolific vegetative growth. Augments plant size and structure which supports more abundant fruit, flower and bud development.

#### **Grow Big Hydro Plant Food (1-0-0)**

Designed for hydroponic use. Contains earthworm castings and essential micronutrients to support vigorous vegetative growth, improving plant size, structure, abundant fruit, flower and bud development.

### **FoxFarm - Big Bloom Liquid Plant Food (0-0.5-0.7)** 32 oz. **OMRI**

Micro-brewed formula with earthworm castings, bat guano, Norwegian kelp, and rock phosphate. Foliar feed with every other watering for boosting fruit and flowering or drench roots to perk up struggling plants. ½ oz. per gallon for seedlings and transplants. 2 oz per gallon for general feeding.

### **Fox Farm Tiger Bloom (2-8-4)**

A phosphorus fertilizer that contains nitrogen to support vigorous growth. It is formulated with a low pH to maintain stability in storage and keep micronutrients available. Tiger Bloom® can be used for both hydroponic and soil applications. Tiger Bloom® is designed to encourage abundant fruit, flower, and multiple bud development. Use Tiger Bloom® at the first signs of flowering through harvest. Feeding rates are available at [www.foxfarm.com](http://www.foxfarm.com).

### **Neptune's Harvest (2-3-1) Fish & Seaweed Fertilizer** 1 qt. | 1 Gal. | 5 Gal. | 55 Gal. **OMRI**

Builds the natural sugar in plants; Increases marketable yields and improved shelf life on fruits and vegetables; flowers and foliage will be stronger and more colorful, blooms more plentiful, fragrant and long lasting.

### **Neptune's Harvest Rose and Flowering (2-6-4)** 1 qt.

A formula created for flowering plants to increase vigor during flowering period and to increase volume, lush foliage and bud density to produce healthy, and vibrant flowers. Contains fresh fish, molasses, yucca extract, seaweed and humic acid.

### **Neptune's Harvest Seaweed Plant Food (0-0-1)** 1qt. | 1 Gal. **OMRI**

Made from Ascophyllum Nodosum seaweed from the North Atlantic Ocean floor. Contains 60 naturally occurring major and minor nutrients and amino acids, contributing to more vigorous plant development and hardiness to extreme environmental conditions.

### **Neptune's Harvest Tomato & Veg Formula (2-4-2)** 1 qt.

A complete fertilizer for tomatoes, vegetables and other crops with intense vegetative stages. Contains fresh fish, seaweed, molasses, yucca extract and humic acids. Contributes to plants by encouraging strong root zones, prolific foliage growth, and increased tolerance to disease, temperature and drought pressure.

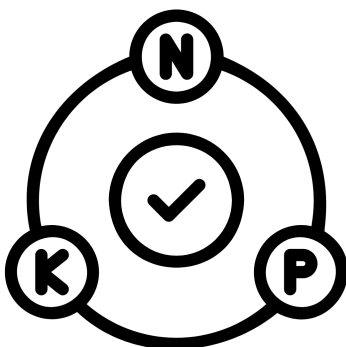
## **Lime**

### **Hi-Cal Lime** 50 lb. **NOP**

100% pulverized limestone; dolomitic lime when soil is already high in magnesium; 38% calcium; 95% calcium carbonate; 50 lb./1000 sq. feet or 1 ton/acre.

### **Hi-Cal Lime Pelletized SuperCal** 50 lb. **OMRI**

Pelletized limestone, high in calcium and less than 0.5% Mg. Elemental calcium is 38%. Calcium carbonate equivalent is 95%. Apply 1 ton/acre or 50 lb./1000 sq. ft.



# Amendments

## Micronutrients, Minerals, Soil Conditioners, and Acidifiers

### **Azomite Granular or Micronized** 44 lb. **OMRI**

Naturally mined, volcanic material w/ 66+ minerals & trace elements to improve depleted soils and assist in plant nutrition & growth. Field crops: 250lb/acre followed by 100lb/acre annually. Vegetables & Flowers: 5 lb./100 sq. ft. Grapes, Roses & Shrubs: 0.5-1 lb. lightly tilled around plant.

### **Boron 10% Pelleted** 50 lb. **OMRI**

Derived from Sodium Calcium Borate, non-acid forming, product of Chile, side dress plants or broadcast across the garden. Apply in the concentration indicated by your soil test.

### **Diamond K Premium 97 Solution Grade Gypsum** 50 lb.

An extremely pure soluble source of calcium-sulphate. When used according to soil test results, Diamond K Premium 97 improves crop yields, quality, and soil structure.

### **Elemental Sulfur 90%** 50 lb. **OMRI**

Lowers pH w/o potential aluminum sulfate toxicity; great for blueberries. 10 lb./1000 sq. ft. or 400 lb./acre to lower pH 1 point.

### **Foli-Cal by Monterey** 1 pt. | 1 qt.

Liquid foliar calcium treatment. Consider use of this product when plants show signs of distress from calcium deficiency. Uptake of calcium through the leaves will work more efficiently than through amending soil with lime products.

### **Fox Farm Bush Doctor Cal-Mag (1-0-0)** 32 oz. **OMRI**

Calcium and magnesium help strengthen cell walls and aid in fruit development, helping you avoid the costly and frustrating deficiencies that cause problems like blossom end rot and tip burn. Feeding rates available on Foxfarm.com

### **Fox Farm Gringo Rasta pH Down** 16 oz.

It's time to get down! Our Gringo Rasta® pH DOWN utilizes citric acid to lower the pH of your nutrient solution in both soil and hydroponic environments. Feeding rates are available at [www.foxfarm.com](http://www.foxfarm.com)

### **Fox Farm Liquid Iron (1-0-0)** 16 oz. **OMRI**

Iron is essential to plant growth, playing a vital role in green up, energy production, and nitrogen fixation. Bush Doctor® Liquid Iron is like a nutritional supplement, giving plants iron when they need it most. For use on trees, shrubs, citrus and roses. Feeding rates are available at [www.foxfarm.com](http://www.foxfarm.com).

### **Fox Farm Manganese (1-0-0)** 16 oz. **OMRI**

Manganese plays a valuable role in photosynthesis and helps plants hold their own against environmental stresses. Feeding rates available at [www.foxfarm.com](http://www.foxfarm.com).

### **Gypsum Nutrasoft Pelletized** 40 lb. **OMRI**

Improves structure of heavy clay soils; 22% calcium oxide; 14-15% sulfur (no effect on pH) 12-50 lb./1000 sq. ft. or 300-500 lb./acre (Replaces the Ida Gro bag)

### **Magnesium Sulfate (Epsom Salt)** 50 lb. **OMRI**

Fast-acting Mg & S fertilizer. It can be used as a foliar application and mixed w/ pesticides or liquid fertilizers. Apply up to 100 lb./acre but not side dressed or broadcast.



### **Humic DG 40 lb. OMRI**

This granular Humic acid is a natural soil conditioner that acts as an organic chelator and microbial stimulator. It includes a high concentration of trace minerals and organic acids and enhances the plant's ability to take in essential nutrients and improve soil structure. Proven benefits of humic acid include increasing soil carbon, improving plant health, improving germination and viability of seeds, stimulating beneficial microbes, chelating nutrients to increase availability to plant, and improving soil structure for better aeration and water movement. Row crops apply at 4-10lbs. per acre. Broadcast at 40 lbs. per acre. Potting soils mix 2-10 lbs. per cubic yard.

### **MaxiCrop Soluble Seaweed Powder (0-0-17) 10.7 oz. OMRI**

This soluble seaweed acts as a biostimulant to help reduce environmental stresses and allows for plants to thrive. Can be used as a foliar spray, in fertigation, or transplant water. The main ingredient, kelp, is high in minerals that increase the health of plants. Use this product as a supplement to your fertilizer program.

### **KMAG (SulPoMag) 50 lb. OMRI**

Intrepid Trio brand KMAG or SulPoMag is 100% natural Langbeinite, a long-lasting, readily available source of low-chloride potassium (22%), magnesium (11%), and sulfur (22%). It is ideal for fruit, vegetable, and row crops. Trio is certified Safe Feed/Safe Food. This product is granular for easy broadcast application

## **Biological Amendments**

### **EM-1 Microbial Inoculant Concentrate 32 oz.**

EM-1 Microbial Inoculant is a naturally-fermented, live microbial product. These microbes can be used to improve the fertility and health of nearly anything - from vegetable crops, to orchards, lawns, and ornamentals. These microbes not only improve grow rates of plants but they are also an effective disease prevention. EM-1 is even great to spray on a compost heap to activate decomposition, and it can be flushed down toilets to help with septic systems. It is extremely concentrated and should be diluted at a rate of 6 ounces per gallon of water. Apply EM-1 with a water can, any type of sprayer, or inject through an irrigation system. For best results, apply it once a week.

### **Endomycorrhizal Inoculant (BEI) from BioOrganics 1.5 lb. OMRI**

Blend of eight types of endospores; 50 spores/cm<sup>3</sup>; use as inoculant for veggies, grapes, fruit trees, berries & flowers by dusting roots, blending into potting soils, or working into soil before seeding; 2-3lb/acre or dust 1/2 tsp./transplant; 3lb treats 1500 veggie transplants

### **Big Foot Mycorrhizae Root Builder & Inoculum 4 oz. | 8 oz. OMRI**

Endomycorrhizae, Biochar, Kelp, Worm Castings, and Humic Acid. Dissolve 1 tsp per gallon of water. For transplanting, dip bare roots or root ball in solution. For existing plants, drench solution in root zone.

### **Mikro-BW Bloom Wizard 8 oz. NOP**

A blend of *Bacillus subtilis* and *Bacillus amyloliquefaciens* root colonizers that promotes root growth and plant protection soluble seaweed, humic and fulvic acids as well as amino acid to support active microbes. Can be used as a foliar spray.

### **Mikrobs Microbial Superpack 8 oz. OMRI**

An organic microbial blend of Rhizobacteria, endomycorrhizal fungi, and beneficial fungi used for stimulating root growth and vigor, providing proactive defense against fungal pathogens, parasitic bacteria, and pest insects. Promoting fast-acting nutrient uptake ability, it also contains humic/fulvic acid, amino acid, kelp, molasses, giving it accessible nutrients and growing bed.

# Pest & Disease Management

## **Aviguard Diamond Mesh Long-Life Bird Netting** ¾" Mesh - 17x100 | 28x100

Keep those pesky birds at bay with our AviGard Diamond Mesh Bird Netting! Made from tough, UV-resistant polyethylene, this netting is perfect for protecting your crops without any harm to your plants. The flexible diamond mesh is easy to handle and comes in various sizes, so you can cover everything from berry bushes to vegetable rows. Easy to install and reusable, it's a must-have for any farm! This is the most durable bird netting we've seen on the market

## **AzaGuard Insecticide & Nematicide** 32 oz. **OMRI**

**Best for broad spectrum larval insect control, especially leafminers, whiteflies, and aphids.**

3% Azadirachtin – active ingredient derived from neem seed extracts. AzaGuard has multiple modes of action and prevents molting between larval, pupal and nymphal stages, and also repels insects on treated crops, reducing insect damage to plants. AzaGuard controls more than 300 different insect species in greenhouse and field applications. Tank mix to control all stages of insect life.

## **AzaSol** 0.25 oz **OMRI**

**Best for broad spectrum larval insect control, especially leaf miners, whiteflies, and aphids.**

The Next Generation Neem. A water soluble 6% Azadirachtin powder insecticide and insect growth regulator, from the Neem tree. Provides an exceptionally potent, non-oil based, and environmentally friendly insect control solution for trees, shrubs, turf, garden, vegetables, fruit trees, and herbs. Can be used as a spray, soil drench, tree injection or through chemigation. Leaves have no oily residue, will not clog of equipment, won't burn leaves or block photosynthesis, are systemic and translaminar (absorbed through leaves) and can be used the same day harvest.

## **Dipel Bt** 1 lb. **OMRI**

*Bacillus Thuringiensis* subspecies *kurstaki* (Btk) strain ABTS-351 (54%). Targets caterpillar-type insects via ingestion of toxins, spores and fermentation solids and causes insects to stop eating, resulting in death. Not harmful to beneficial insects, animals or humans. OMRI listed for organic use. 4-hour re-entry (REI); 0-day pre-harvest interval (PHI); residue exempt; IRAC Group 11A.

## **Monterey Liqui-Cop** 16 oz. | 32 oz. | 16 oz. RTU

Fungal disease-control for fruits, vegetables, citrus trees, shrubs and ornamentals.

## **Javelin Bt** 5 lb. **OMRI**

*Bacillus Thuringiensis* subspecies *kurstaki* (Btk) strain SA-11 (85%). One bite, and caterpillars immediately stop eating and die within 2 days. OMRI listed for organic use. May be used up to and on the day of harvest.

## **B.T. Liquid Concentrate by Monterey** 16 oz. | 32 oz. | RTU 32 oz. **OMRI**

Same active ingredient as above but in an easy to mix liquid concentrate. Mix 1.5 ounces per 3 gallons of water for fruits and vegetables and 2 ounces per 3 gallons of water for stubborn bagworms, other worms and caterpillars on shade trees and ornamentals.

## **FungOUT Fungicide & Bactericide** 2.5 Gal. **OMRI**

Best for powdery mildew, fire blight, black rot, bitter rot, anthracnose, bacterial canker, downy mildew, target spot, black spot, and septoria leaf spot. 1.07% Citric Acid- FungOUT establishes a protective barrier on foliar surfaces that inhibits fungal and bacterial pathogen development. This product can be used on the day of harvest for cleaning fruits and vegetables and is completely odorless.

**Natural Wet Wetting Agent** 1 lb. **OMRI**

Non-ionic surfactant that can be added to the spray tank to enhance spreading and sticking properties of the spray solution. It can also facilitate nutrient and water absorption and can be applied to potting mixes to aid in the uniformity of water absorption. This product reduces surface tension of all liquids, increases water uptake in plants as well as water penetration into the soil and increases drainage and reduces salinity. Pairs efficiently with Dipel DF (see above).

**BerryCARE Fungicide and Bactericide Concentrate** 2.5 Gal. **OMRI**

This citric acid-based fungicide/insecticide creates a protective barrier on the surfaces of leaves in fruits and berries, protecting the outer cell walls of the plants from being penetrated by fungal and bacterial pathogens. Can be used leading up to and on the day of harvest.

**BioSafe Sanidate 5.0** 2.5 Gal. **OMRI****Best for post harvest sanitation. GAP approved!**

A highly effective, broad-spectrum disinfectant and sanitizer formulated to meet the rigorous demands of food safety, agriculture, and industrial cleaning. With its active ingredient of 5% hydrogen peroxide and peroxyacetic acid, Sanidate 5.0 quickly and efficiently eliminates bacteria, viruses, fungi, and other pathogens on contact, ensuring a clean, safe environment for your crops, equipment, and facilities. OMRI listed for organic use.

**Diatomaceous Earth Feed Grade** 6 lb. | 40lb. **OMRI**

Use outdoors on slugs, ants, grasshoppers, crickets, indoor use on cockroaches, silverfish, carpet beetles, bedbugs, ants & fleas. Mix with feed to keep it fresh longer at a rate of 1 bag per ton.

**Cease** 1 Gal. **OMRI**

1.34% *Bacillus subtilis* strain QST713. Proven to be highly effective bio-fungicide and insecticide against an array of fungal and biological pathogens. Cease is best used in preventative applications before signs of disease occur. Leaves little-to-no residue when used as a foliar spray. OMRI listed; not harmful to beneficial insects, humans or animals.

**Come & Get It Fire Ant Killer** 1 lb.

Kills the Queen and the mound using a bait that ants take back to the colony. Ants consume the toxic bait and start dying within 12-24 hours.

**Complete Disease Control Concentrate by Monterey** 16 oz. | RTU 32 oz.. **OMRI****Best for broad spectrum prevention of soil and air borne fungal and bacterial disease**

Same active as Certis's Double Nickel, *Bacillus amyloliquifaciens*. This beneficial bacterium colonizes roots, leaves, and other plant surfaces preventing many fungal and bacterial diseases from establishing a home. Use as a foliar spray or soil drench.

**Grower's Ally Crop Defense** 8 oz. **OMRI****Broad spectrum miticide, insecticide and fungicide to use for any plant growth stage**

Active ingredients are thyme, rosemary, clove and peppermint oil. For all indoor or outdoor plants at any life stage. Dilute and spray to kill mildew, mites, and other soft bodied insects and eggs on contact.

**Copper Fungicide** 2.5 Gal. **OMRI**

A liquid flowable broad spectrum fungicide combining soluble copper and a fatty acid which creates a true soap to evenly distribute copper across plant surfaces. The copper breaks down and attacks the cell walls of fungal pathogens leaving behind a hostile environment for any future pathogen spores.

**I Must Garden Deer Repellent** RTU 32 oz. | RTU 1 Gal. | 32 oz.

All-natural plant-based deer repellent made in Chapel Hill. 100% back guarantee from the manufacturer if not fully satisfied. Available in RTU spray and liquid concentrate.

## Plantskydd Deer & Rabbit Repellent **OMRI**

Repels moles, deer, gophers, rabbits and other herbivorous pests from grazing on plants by emitting an odor that triggers prey animal survival instinct. Available in granular, liquid, and soluble concentrate powder forms.

### **GRANULAR**

3.5 # | 8#

Apply to the ground

### **LIQUID**

RTU 32 oz. | RTU 1 Gal. | 1 lb. Concentrate

Foliar application

## ProtekNet Insect Protection Cover

The ProtekNet 25 g insect net offers complete crop protection against insects. 25g. mesh is the most popular solution against most insects and is suitable for all types of production. Very versatile, it can be used in the field, large tunnels or greenhouses. The net can be installed directly on the plants or hoops for better results.



### Available Sizes

**6.9' Width** By the Foot | 33' Roll | 164' Roll

**10' Width** By the Foot | 164' Roll

## Monterey Garden Insect Control 8 oz. | 32 oz. | 1 Gal. **OMRI**

A broad-spectrum insecticide containing Spinosad, a compound produced through the fermentation of a naturally occurring soil bacterium. Spinosad targets the insect nervous system, leading to paralysis and death within 1 to 2 days.

## EcoShield by HOMS 64 oz. **OMRI**

Botanical Insect Control. Use in vegetable gardens, lawns, berry bushes, and on ornamentals. Quickly kills most agricultural insect pests including mites, aphids, leaf beetles, caterpillars, ants, as well as lawn pests such as ticks, mosquitoes, fleas. Made from organic plant oils from farms in the Southeast. Not a systemic pesticide and safer for use around pollinators. OMRI listed for botanical insect control on animals and livestock.

## Safer Insect Killing Soap RTU 16 oz. | 16 oz. **OMRI**

**Best for control of small, soft bodied insects.**

A natural insecticide, fungicide, and miticide made from 49% potassium salts of fatty acids. Kills a wide variety of insect pests, yet it can be used up to the day of harvest! 2.5 oz/ gallon. Makes 6 gallons.

## DES-X Insect Killing Soap 2.5 Gal. **OMRI**

An organic insecticide and miticide, and deer repellent made of 47% potassium salts of fatty acids. Effectively destroys pests on contact by penetrating the body of the insect and disrupting cell functions.

## PAA Test Strips (USDA GAP)

Quickly test peracetic acid levels to ensure your produce is compliant with federal and state guidelines, and for USDA Gap auditing.

## Fruit Tree Spray Plus by Monterey 16 oz. **OMRI**

**Best for pest, fungus, and mite control Spray in evening to avoid pollinators and phototoxicity.**

1 pint concentrate makes 16 gallons. Broad spectrum insecticide, fungicide and miticide. Active ingredients include Pyrethrins and Neem. Effective for treating pests on fruit & nut trees, ornamentals, shrubs, flowers, and vegetables. Can be used up to the day of harvest.

## Monterey Neem Oil Concentrate 8 oz. | 16 oz. | 32 oz. RTU **OMRI**

**Best for broad spectrum pest, fungus, and mite control. Concentrate spraying in the evenings to avoid pollinators and phototoxicity.** 70% neem oil broad spectrum insecticide, fungicide, miticide, repellent & insect growth regulator; gentle on beneficials



**Rango Neem Oil** 32 oz. | 1 Gal. **OMRI**

70% Neem cold pressed concentrate. Cold pressed Neem keeps the full spectrum of active compounds intact including 0.35% azadirachtin, making Rango a great value for what it can offer!

**Monterey Horticultural Oil** 32 oz. | 1 Gal. **OMRI****Best for early season broad spectrum pest control.**

80% mineral oil – This is the same product as the agricultural sized TriTek by Brandt but in smaller packaging. If you need the TriTek size, we can special-order. 1 quart concentrate makes 12-25 gallons spray. Average application rates: Vegetables, fruits & ornamentals = 1-2 gallons; Mature fruit tree = 3-4 gallons; Citrus trees = 8-15 gallons. Effective for smothering adults, larvae and eggs of aphids, mites, scales, whiteflies and other soft-bodied insect pests. For the dormant and growing season. Mixes well with other pest controls. Toxic to fish; use caution when applying to avoid runoff and/or drift to sensitive areas.

**Monterey Neem Oil Concentrate** 8 oz. | 16 oz. | 32 oz. RTU **OMRI**

**Best for broad spectrum pest, fungus, and mite control. Concentrate spraying in the evenings to avoid pollinators and phototoxicity.** 70% neem oil broad spectrum insecticide, fungicide, miticide, repellent & insect growth regulator; gentle on beneficials

**Rango Neem Oil** 32 oz. | 1 Gal. **OMRI**

70% Neem cold pressed concentrate. Cold pressed Neem keeps the full spectrum of active compounds intact including 0.35% azadirachtin, making Rango a great value for what it can offer!

**Medina Orange Oil** 32 oz.

This product does not have a pest label, but orange oil has been known for generations to be a natural pest control, most especially effective on fire ants. This product is much more concentrated than other orange oil products on the market, such as Orange Guard. As a foliar spray, mix 2 ounces per gallon of water, and as a soil drench, mix 4 ounces per gallon. Orange oil also works great as a natural cleaning solution! This product is not available in larger sizes. The company says that the orange oil degrades most plastics used in the manufacturing of larger bottles.

**Kaligreen Potassium Bicarbonate** 5 lb. **OMRI****Best for powdery mildew**

81.9% microencapsulated potassium bicarbonate fungicide. Kaligreen is a fast-acting broad spectrum foliar fungicide that disrupts the potassium ion balance in target cells which collapses the cell walls.

**Pyganic** 8 oz. **OMRI****Best for broad spectrum insect control – Spray in evening to avoid pollinators**

Active ingredient is 1.4% PyGanic; treats 6,000 ft. sq. Same product as below, but in a more cost-effective size for smaller applications. Most effective control achieved when used at first sighting of pests. Mix only what you need to treat affected area and use personal protective equipment when spraying. Broad spectrum insecticide for over 100 pests. **Avoid use around honeybees & water sources containing fish.**

**Pyganic Concentrate** 16 oz. | 32 oz. **OMRI****Best for broad spectrum insect control – Spray in evening to avoid pollinators**

Broad spectrum insect control w/fast result; use on all indoor & outdoor plants; zero pre-harvest interval; non-corrosive pyrethrin liquid; 1-2 oz/gal water; Call or email for pricing on larger sizes or 5% concentrates.

**1.4% Concentrate** 32 oz.

**5% Concentrate** 16 oz. | 32 oz.

**Monterey Spinosad** 8 oz. | 16 oz. | 32 oz. | 1 Gal. **OMRI**

Spinosad A & D, 0.5%; Use in vegetable gardens, fruit trees, lawns, ornamentals; controls Colorado potato beetles, corn borers, ants, fire ants, beetles, caterpillars, worms, fleas, leafminers, spider mites, thrips, codling moth, Japanese beetles & more; 2 oz/1 gal water.

**Marrone Regalia** 1 qt. **OMRI**

Can be used with Regalia and Grandevo as a complete integrated pest management program. The Marrone product line has strong efficacy among organic farmers but has previously been available only in sizes and with pricing out of reach of small growers. No more – smaller sizes are now available! Regalia Biofungicide delivers better yield and improved harvest quality. Its ISR and SAR modes of action increase crop performance by stimulating a plant's innate ability to fight diseases. This fungicide offers preventative activity and early control of yield-robbing diseases that result in increased marketable yield and profit on every acre. For more info and application rates, visit [marronebio.com](http://marronebio.com).

**Serenade** 2.5 Gal. **OMRI****Best for broad spectrum preventative fungicide**

An advanced, natural solution for controlling a wide range of fungal and bacterial diseases in plants such as Pythium, Rhizoctonia, Fusarium, and various strains of Phytophthora. Formulated with the beneficial bacterium *Bacillus subtilis*, Serenade® provides broad-spectrum protection and promotes healthy plant growth by preventing and treating harmful pathogens without the use of synthetic chemicals. Safe for use on a variety of crops.

**Entrust SC** 32 oz. **OMRI**

22.5% Spinosad: Spinosyn A & D. A powerful and trusted killer of a wide variety of foliage-chewing soft-bodied insects including flea beetles, Colorado potato beetles, caterpillars, and much more. Kills on-contact as well as through ingestion which attacks the target pest's nervous system. Entrust is the most concentrated and economical (cost per acre) Spinosad available for certified organic growers.

**Corteva Conserve SC** 16 oz.

Conserve is another spinosad concentrate similar to Entrust however not approved for organic production and around half the concentration (11.6% Spinosad: Spinosyn A & D). Labeled for control of thrips, lepidopterous larvae, foliage feeding works, fire ants and much more!

**Surround Crop Protectant** 25 lb. **OMRI**

A powerful, environmentally friendly solution developed by the USDA to protect crops from a broad spectrum of insect pests while also providing defense against environmental stressors such as extreme heat and sunburn. Derived from calcined kaolin clay, Surround® forms a protective barrier on plant surfaces, reducing the impact of pests and extreme weather conditions without the use of harmful chemicals. Ideal for organic growers, it ensures that crops remain healthy and thriving throughout the growing season. OMRI listed for organic use.

**Tree Banding Gum, Treekote** 15 oz.**Great for trapping crawling insects and pests on tree trunks or on garden plants.**

Keep your trees protected with our Tree Banding Gum. This easy-to-use gum comes in a convenient container, perfect for applying around the trunks of your trees. It helps to trap and deter pests like insects and rodents, keeping your trees healthy and vigorous. Simple to apply and effective, it's a must-have for any orchard or garden.

**ZeroTol 2.0** 2.5 Gal. **OMRI****Broad spectrum algaecide, bactericide, fungicide**

A fast-acting, broad-spectrum fungicide and bactericide formulated to provide powerful pathogen control in agricultural and horticultural applications. Powered by hydrogen peroxide and peracetic acid, Zeritol® 2.0 is incredibly effective against a wide range of pathogens, viruses, and harmful spores, making it the ideal solution for sanitizing surfaces, equipment, and facilities in food safety, greenhouses, nurseries, and farms. OMRI listed for organic use.

# Crop Protection & Season Extension

## Weed Control and Ground Covers

### **Corn Gluten Healthy Grow (9-0-0)** 50 lb.

Works wonders as an organic source of nitrogen as well as a pre-emergent annual grass suppressant for crabgrass and foxtail. Contributes to deeper roots, better water retention, and vibrant green growth throughout the season.

### **EcoBlend Weed Control** ½ Gal. | 2.5 Gal. | 5 Gal. **OMRI**

Ecoblend Weed Control is an effective post-emergent all-purpose herbicide made in our own backyard – Pittsboro, NC! Breaks down plant mass and biodegrades rapidly. Certified for organic use. Leaves treated area plantable within 7 days.



### **6" Landscape (Sod) Staples** By the Pound | 33 lb. Case

Great for securing various fabrics such as ground cover, erosion mats, and more.

### **GeoTex 601 Geotextile Fabric** By the Foot | 12.5' x 360' Roll

6 oz Needle punch fabric stronger than ground cover as a more permanent water permeable weed barrier for farm roads, packing sheds, greenhouses, and other hardscapes. Approved for Soil & Water cost share programs.

### **Lumite Ground Cover**

Durable, woven plastic that's great for weed control in row crops and greenhouse flooring. The 3' roll is perfect for rows and the 6' roll for patches. Woven plastic allows for permeability and durability allows for multiple uses. Other widths can be special ordered.

**3' x 300'**

**4' x 300'**

**6' x 300'**

**12' x 300'**

### **Silage Tarps** 5 mm.

UV stabilized with a 12 month guarantee, black on one side, white on the other. These tarps would be ideal for occultation as is described in *The Market Gardener* by Fortier. Other sizes can be special ordered.

**24' x 50'**

**32' x 50' OR 100'**

**40'x100' roll**

**50'x100' roll**

## Trellising and Staking

### **Wedge-Loc T-Post Adapters**

<b>Hinge Set (#115)</b> Hinges (2)	<b>Single Diagonal Brace Set (#208)</b> #101 Collars (2), #102 Wedges (2), #106 60* sockets (2)
<b>Corner/Double In-Line Brace Set (#205)</b> #101 Collars (3), #102 Wedges (3), #106 60* Sockets (3)	<b>Horizontal Brace Set (#209)</b> #101 Collars (2), #102 Wedges (2), #106 60* Sockets (2)

### **Hortonova Trellis Netting**

Strong, polypropylene mesh with 6"x6" holes; This easy, cost-effective trellising allows your plants greater exposure to sun and air. Install horizontally for cut flowers or vertically for climbing plants like beans, cucumbers, peppers, tomatoes, and melons. Need a different size? Contact us about special orders, including 3280' rolls.

**36"x328'**

**48"x328'**

**59"x328'**

## Bamboo Stakes

**3' Stakes** Each or Bundle (500)

**4' Stakes** Each or Bundle (500)

**5' Stakes** Each or Bundle (250)

**6' Stakes** Each or Bundle (200)

**1" x 6' Hardwood Stakes (Pencil Tip)** Each or Bundle (25)

**Reusable Trellis Clips** (250 ct)

**Oiled Sisal Twine** 500 ft.

**Tytan Poly Twine** 2100 ft.

## Row Cover & Shade Cloth

**Custom Orders!** We can special order both shade net AND row cover at any weight and size, especially if we can tack your order onto our warehouse orders and avoid additional freight. *See our Group Ordering Info Sheet!*

**Aluminet Shade Cloth** 14' Wide | By the Foot OR 100' Roll

This aluminum woven shade cloth offers more reflectivity and therefore cooler temperatures than traditional black shade cloth without sacrificing needed light transmission for plant growth. It is especially popular stretched over high tunnels and greenhouses in the summer and better extends the life of your plastic through its increased reflectivity.

**Black Knitted Shade Cloth** By the Foot OR 100 ft. Roll | 6 ft. | 12 ft.

Our in-stock shade cloth offers 40% shade and is knitted so it can be cut to size without unraveling. It has rough cut sides (We can custom order taped edges and grommets).

### Reusable Shade Cloth Grommets

These plastic clips are sold individually and are the perfect DIY solution to hanging shade cloth without grommets pre-installed. Simply close a clip-it on your shade cloth everywhere you need to secure it. The clips hold well when closed. Rope can be threaded through the loop to tie your shade cloth off to posts, buildings, high tunnels, or whatever structure you need.

## *Agribon Row Cover*

We are THE North Carolina Agribon dealer. Listed below are the sizes and weights we carry in-store all year. Don't see what you're looking for? Subscribe to our newsletter to keep up to date on custom row cover ordering.

**Agribon AG-19 Row Cover** 0.55 oz.

Standard Grade, 85% Light Transmission, Used for insect and wind control as well as light frost, gives crops up to 4°F of protection.

**83"**

By the Foot | 250' | 1000' Roll

**10'**

250' | 1000' Roll

**Agribon AG-30 Row Cover** 0.9 oz.

Medium Grade, 70% Light Transmission, Used for heavier frost protection and some overwintering, gives crops up to 6°F of protection

**83"**

By the Foot | 250' | 500' | 800' Roll

**10'**

250' | 1000' Roll

**20'**

1000' Roll

**Agribon AG-50 Row Cover** 1.5 oz.

Heavy - 50% Light Transmission, Ideal for overwintering, even if we have a harsh winter, gives crops up to 8°F of protection

**83"**

By the Foot | 500' Roll

**10'**

500' Roll



## **Supports & Accessories**



### **Repins** Each OR Bag of 50

Red plastic pins with a loop top for easy insert and pull up of row cover fabric.

### **Bungee** By the Foot

The 3/16" black & white polyester elastic is used for Tunnel Flex installation

### **Galvanized Steel Wire Hoops** 0.135 in. x 74 in.

These wire hoops are designed to hold row covers, exclusion insect netting and low tunnels above your crops to protect them especially in tunnel production. They come in pre-cut straight lengths for convenience in transport and storage.

### **Galvanized Anchor Stake** 18 in.

Galvanized anchor steel stakes are used to anchor the Tunnel Flex system hoops to the ground and prevent gusts of high wind from blowing the system.

### **Fiberglass Row Cover Rods** 5 mm. x 8 ft. | Each OR Bundle (50)

Easy to install; bounces back if crushed by snow; store out of sunlight.

### **Hold Down Netting** By the Foot

Comes as a black net tube, like a stocking. Fill with rocks and cut in sections, tying off at each end, to make a clean, easy way to hold down row cover without ripping.

### **Long Life Row Cover Anchor Bags** 28 in. x 11 in. | Each OR Bundle (50)

UV stabilized, heavy duty, woven bags are rated for 15 years of use. Fill with sand, grit or fine gravel then tie the open end to secure. Use the handle built into the other end to hold down silage tarps, greenhouse plastic, row cover or anything else you need to stay put.

## **Greenhouse Supplies**

### **Wiggle Wire** 4 ft. | Each OR Case (50)

### **Channel for Wiggle Wire** 8 ft. | Each

### **Greenhouse Repair Tape** 6 mil. 2" x 48 | 4" x 48 | 6" x 48'

Easily repair seams, rips, tears and holes in greenhouse plastic to avoid expensive replacements & extend its lifespan.

### ***Greenhouse Plastic***

All of our plastic is 6 mil and UV stabilized with a 4-year lifespan.

#### **Available Sizes**

#### **100' Rolls**

10' wide | 32' wide  
14' wide | 40' wide  
28' wide | 48' wide  
50' IRAC

#### **110' Rolls**

24' wide  
28' wide  
32' wide  
42' IRAC



Looking for sizes other than what's listed? Email [melinda@cfhsupply.com](mailto:melinda@cfhsupply.com) for special order info.

# Food & Produce Packaging

## Egg Cartons Each OR Sleeve (200)

Blank top, one-dozen capacity cartons. Barcode, storage instructions, and safety information pre-printed on lid.

## U-Pick Gallon Hex Baskets Each OR Case (100)

## Bulb Crates

Traditional rigid black plastic bulb crates used for flower growers frequently repurposed for produce harvest and other farm storage!

## CRESBI Collapsible Crate

Designed for convenience and efficiency, the Cresbi collapsible crate can be used for a variety of needs and will also transport your Cresbi clamshells. When fully opened, it measures 15 inches wide by 10 inches deep by 8 inches high. Its collapsible design makes it super easy to store when not in use, and it's sturdy enough to handle the rigors of market days and transport.



### Sun Sugar Kraft Produce Container

Looking to reduce plastic waste in your farming operation? SunSugar Kraft Clamshells are the perfect solution. Made from fully compostable materials, this container offers an eco-friendly alternative to traditional plastic clamshells. It is also beautifully designed, making it an excellent choice for market displays and sales to grocery stores. Plus, there's ample space on the container for your farm's stamp or a custom label.

**1 qt. (Brown)**  
Each OR Case (500)

**2 qt. (White/Brown Reversible)**  
Each OR Case (300)

**3 quarts (Brown)**  
Each OR Case (235)

## Berry Pulp Containers

Perfect for everything from delicate berries to muscadine grapes and cherry tomatoes, these green pulp containers available in quarts and pints are a farmer's best friend. They're recyclable and designed with both market tables and transportation in mind. If you need easy carrying, we also offer a handy box to accompany the quart containers that holds six containers at once and is stackable.

**Pint**  
Each OR Case (500)

**Quart**  
Each OR Case (250)

**Flat Box**  
Holds 6 individual pulp quarts

## 10lb. Single-Layer Tomato Box (Unwaxed)

Keep your tomatoes fresh and blemish free with this 10-pound single-layer tomato box. Designed to hold one layer of tomatoes, this sturdy one-piece box ensures that your slicing tomatoes won't get crushed during transport to market or storage. It features a built-in lid for easy closure with a gap on top that allows for airflow, keeping your tomatoes cool and well-ventilated. For bulk purchasing options, contact [melinda@chathamfarmssupply.com](mailto:melinda@chathamfarmssupply.com).

## Waxed Produce Boxes

These wax boxes are the standard choice for packing and transporting produce. We offer a price break at quantities of 50 and again at pallet quantities. We typically keep up to a pallet in stock, so for larger orders we ask that you contact [deliveries@chathamfarmssupply.com](mailto:deliveries@chathamfarmssupply.com)

**½ Bushel** Each OR Pallet (560) | **¾ Bushel** Each OR Pallet (500) | **1 ½ Bushel** Each OR Pallet (540)





# Soils, Composts, & Growing Mediums

## **Bagged Soils**

### **Coast of Maine Bar Harbor Potting Soil** 2 cu. ft. **OMRI**

This lightweight soil mixture is made with salmon, blueberry, lobster and other composts, as well as calcium and chitin-rich lobster shells, sphagnum peat, perlite and kelp meal. It is dark brown in color and provides the perfect balance between water retention and drainage needed for healthy plants. Media is fine enough to use in small cell seeding applications. Available in totes if coordinated with store orders.

### **Coast of Maine Cape Neddick Houseplant Potting Soil** 8 qt. | 16 qt. **OMRI**

This blend is specially formulated for indoor houseplants and flowers using coarse coconut coir, perlite, sphagnum peat moss, and aged bark to optimize drainage and aeration for robust root development. Whether you are growing peace lilies, spider plants, philodendrons, monstera, or other popular or exotic houseplants, this unique compost-free blend provides the optimum structure and benefits for nurturing strong, beautiful indoor plants and flowers.

### **Coast of Maine Raised Bed Mix** 2 cu. ft. **OMRI**

This rich and diverse soil grows big and healthy vegetables, herbs and flowers. It is made with a mixture of manure compost, worm castings, lobster and kelp meals, mycorrhizae, greensand and biochar. It is ready to use straight out of the bag with no need for additional components or tilling. Great for raised beds, planter boxes, and container gardens and should provide season long fertility without need for supplemental feeding. Available in totes if coordinated with store orders.

### **Coast of Maine Sprout Island Seed Starter** 16 qt | 2 cu. ft. **OMRI**

A rich mixture of blended sphagnum peat moss, perlite, kelp meal, worm castings and well-aged compost. It contains mycorrhizae and is ready to use in cell packs\* or flats and provides natural moisture retention and aeration. It has a mild organic fertilizer charge that creates a biologically diverse environment ideal for germinating seeds and root cuttings. \*Recommended for 72 cell or larger.

### **Daddy Pete's Potting Soil** 1.5 cu. ft.

A blend of Pete's Cow Manure and pine bark fines with Permatill.® excellent for conditioning compacted soils, reducing vole activity and pressure, and building new beds.

### **Daddy Pete's Planting Mix** 2 cu. ft.

A blend of Pete's Composted Cow manure, perlite, and dolomitic lime providing exceptional drainage and NPK with Calcium for boosting plant vigor and resilience.

### **Fafard Organic Potting Mix** 1 cu. ft. **OMRI**

Canadian sphagnum peat moss, aged pine bark, perlite, vermiculite, dolomitic limestone, gypsum, and all natural Perdue® organic fertilizer with no synthetic materials such as pesticides, chemical fertilizers, or water conditioners.

### **Fox Farm Coco Loco Potting Soil** 2 cu ft.

Coco Loco contains triple washed coconut coir to ensure that additional salts are not a concern in your plant production. This mix requires less watering than other mixes and is suitable for transplant production, potted plants, hanging baskets and vertical gardening. This mix is primarily coir, aged forest products, perlite and amended with worm castings, bat guano, kelp meal, oyster shell, dolomitic lime and topped off with a dose Mycorrhizal inoculant containing 15 different strains.

### **Fox Farm Ocean Forest Potting Soil** 1.5 cu ft.

Similar to Happy Frog, but extra enriched with fish and crab meals, this potting mix will make even the brownest thumbs turn green!

### **Fox Farm Happy Frog Potting Soil** 2 cu ft.

A planting mix alive with beneficial microbes and fungi that help break down organic matter and feed plant roots. This is the only planting mix we've seen that has an ingredient panel listing the species and quantities of each of the bacteria and mycorrhizal fungi colonies in the mix. Happy Frog also includes composted forest humus, peat moss, perlite, worm castings, bat guano, humic acid, oyster shell, and dolomitic lime.

### **Fox Farm Raised Bed Planting Mix** 1.5 cu ft.

This mix is great for fruits, flowers, veggies, and herbs in raised beds and container gardens. Aged forest products and peat moss hold necessary moisture, while providing proper drainage. Nutrient-rich ingredients such as earthworm castings, bat guano, oyster shell, and dolomitic lime ensure your plants are happy and healthy.

### **SUNGRO Grower's Gold Potting Mix** 2 cu.ft.

A versatile mix perfect for container gardening. Made with coconut coir for excellent moisture retention, it features the same high-quality ingredients as the Sunshine® #4 mixes (Processed Softwood Bark, Canadian Sphagnum Peat Moss, Perlite, Compost, Coconut Coir, and Dolomite), making it great media for both indoor and outdoor applications.

### **SUNGRO Professional Grower Mix** 2.8 cu.ft. **OMRI**

University-formulated mix containing Canadian sphagnum peat moss, perlite, dolomite lime and yucca extract as an organic wetting agent. Sungro has just started blending worm castings into this standard mix to provide added nutrition and biology.



## **Composts**

### **Wakefield HERO - BioChar & Compost Blend**

Compost HERO biochar blend is made with premium Wakefield BioChar, organic compost and mycorrhizal fungi to create a superior soil conditioner. The recipe starts with our 20% premium biochar. Vegetable Gardens & Flower Beds: Mix 1/2-inch BioChar Source into top 4-6 inches of soil, seed, and water in.

### **Coast of Maine Quoddy Lobster Compost** 1 cu. ft. **OMRI**

Coast of Maine Organic Products Quoddy Blend Lobster Compost is made with chitin and calcium-rich lobster shells, compost and sphagnum peat moss. It is a dark-brown, complex soil filled with naturally occurring microorganisms all plants need for healthy growth. It drains well and is an ideal soil conditioner for existing beds that need reinvigoration. High calcium content makes this a great amendment for tomato and pepper beds! High chitin levels make this a natural pest deterrent – given that chitin releases an enzyme in the soil that can serve as an insect repellent. Available in totes if coordinated with store orders.

### **Daddy Pete's Cow Manure 50#**

An organic cow manure blend which undergoes 40-60 days of composting and reaches an internal temperature of 160 degrees Fahrenheit, eliminating weed seeds and pathogens.

### **Daddy Pete's Kickin Chicken 40#**

A blend of composted chicken manure and cow manure great for amending beds and providing balanced, slow release fertility to the soil.

### **Daddy Pete's Mushroom Compost 25 qt**

A wonderful compost blend for enriching established beds and planters. Apply to vegetables, fruits, trees & shrubs, flowers and herbs for improved soil texture and

### **Vermont Compost Fort Vee & Fort Light**

Approved for Organic Certified Farms – Tried and true manure-based organic soils for seed starting and potting up. With plenty of lead time, we can also source 2 cu. ft. totes, other products in the Vermont Compost line, and offer discounts on pallet quantities of bagged material. Reach out to [melinda@chathamfarmsupply.com](mailto:melinda@chathamfarmsupply.com) for details.



### **WormGanic Worm Castings 1 cu. ft.**

These castings are derived from worms fed an organic corn silage diet on peat moss bedding. High in organic matter, worm castings will enhance any soil or soilless media with increased water holding capacity, increased biological activity and improved soil structure. This 'vegetarian' worm casting product does not have the same micronutrient levels as manure-based castings. It offers an affordable bulk option, but if you have specific micronutrient needs, we recommend blending in some powdered Azomite, Kelp meal, Alfalfa meal or other liquid fertility amendments to make up the difference.

## **Growing Media & Amendments**

### **Hull Farm Cocoa Shell Mulch 1 cu. ft.**

It's hard to get some chocolate when you're a plant. Hook your perennials up! Cocoa mulch is made from discarded shells of the cocoa bean pods after they are roasted in the process of making chocolate. These make a fantastic mulch that lasts longer, has some fertility and supports the growth of mycelial networks in perennial spaces. Coarser chips, a pH of 5.8 and slower breakdown than other mulches make cocoa mulch suitable for most perennial spaces.



### **Seven Springs Coconut Coir Block**

Coconut Coir is a natural fiber made from coconut husks and is a renewable resource alternative to peat moss. The extraction of the coconut fiber husks results in a by-product called coco pith or coco coir. Coconut Coir is a 100% natural growing medium and is triple soaked by monsoon rains for 18 months while on the ground and dried in the sun to Ultra Super Wash™ the coconut fiber to ensure salt content is below 0.3-0.5mS/m and a pH of 6.0-6.5. This makes an excellent growing medium for hydroponics or container plant growing. The red color of the coconut pith block hints at product maturity.

### **Daddy Pete's Soil Enhancer 2 cu. ft.**

Aged pine bark fines that work phenomenally to break up clay soils and provide drainage to trees, shrubs, and in-ground beds.

### **Happy Frog Soil Conditioner 1.5 cu. ft.**

Use this blend to amend vegetable garden beds, roses, established perennial plantings, fruit trees, herb gardens or any other space that could use some love. Made of aged forest products and amended with worm castings, bat guano, oyster shell, dolomitic lime, humic acids, and 15 different strains of mycorrhizal fungi.

### **Peat Moss 10 qt. | 3.8 cu.ft. OMRI**



Compressed bale of 100% Canadian sphagnum peat moss. Ideal for starting seed, raised beds, and soil conditioning.

**Perlite** 8 qt. | 4 cu. ft.

Asbestos-Free! Good for potting mixes; used to improve drainage. Good for potting mixes; used to improve drainage.

**Permatil** 40 lb.

Permatil is a kiln fired slate product that expands the slate to provide pore space. When incorporated into heavy compacted soils, permatil creates much needed pore space for roots, oxygen, and water, improving your plant's growth. Permatil also creates an undiggable barrier, keeping voles away from your garden spaces. Once incorporated into the soil, permatil does not break down and does not need to be reapplied.



**Rice Hulls** 50 lb. **OMRI**

Bale that expands to roughly 7 cu. ft. This parboiled rice hull is a renewable resource that is a good alternative to perlite and vermiculite which come from overseas and are becoming harder to source. It is also less dusty. Parboiled rice hulls have a pH near neutral to slightly alkaline but because of their low cation-exchange capacity, they have little effect on the substrate pH.

**Vermiculite, Coarse** 4 cu. ft.

Asbestos-free. This is the vermiculite most commonly used in square foot gardening because it tends to hold up longer in the soil than medium grade.

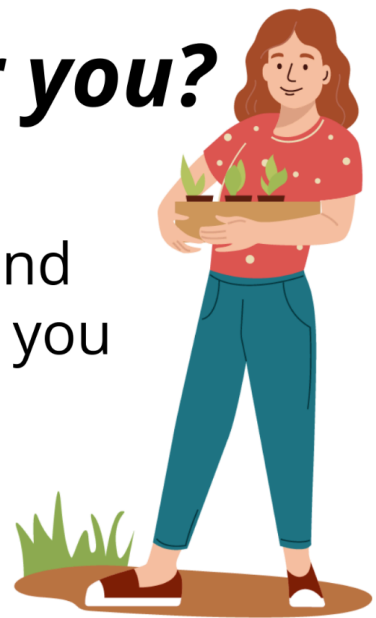
**Vermiculite, Fine** 8 qt. | 4 cu. ft.

Asbestos-free. Good alternative for smaller containers and seed starting mixes

## ***Not sure what's best for you?***

We're here to help! Our staff is knowledgeable and experienced, and want to ensure you get exactly what you need to get the job done right.

Call us at (919) 542-3353, email [info@chathamfarmsupply.com](mailto:info@chathamfarmsupply.com), or visit us in-store or online at [chathamfarmsupply.com](http://chathamfarmsupply.com)





# Cover Crop Seed

## Cool Season Cover Crops

All of our cover crop seeds are **NON-GMO**. The list below is most applicable for crop producers. For a complete list of our annual cover crops and perennial forages as well as pricing, see our website and click on the link for **Cool Season Seed Pricing**.

### **Austrian Winter Peas**

Fixes 70-125 lb. Nitrogen/acre; sow 2-3 lb./1000 sq.ft. or 70-120 lb./acre; early to mid-fall – We typically stock untreated seed as well as a small amount of organic certified. You may need to special order if you want 50lbs. or more of organic certified seed.

### **Barley**

Plant in fall, Great for goat forage and cover crop, Broadcast at 140lb. per acre or 3 lb. per 1000 sq. ft. – We typically stock organic certified seed.



### **Chicory**

Sow 3-4# to the acre in either Spring or Fall to enhance wildlife forage plots. Once established chicory can produce forage for several years and boasts as much protein as some legumes in feed value. Seed is treated with 'yellow jacket' seed-starter, a plant hormonal germination enhancer.

### **Clover, Crimson**

Fixes 80lb Nitrogen/acre; sow 1/2-2 lb./1000 sq. ft. or 20-40 lb./acre; cold/shade tolerant. We stock uncoated/untreated conventional crimson clover seed.

### **Clover, Medium Red**

Perennial legume used to rest & rebuild soil; sow 4-6 oz/1000 sq. ft. or 10-15 lb./acre; plant early spring or late summer. We stock uncoated seed. Organic red clover can be special ordered.

### **Clover, Ladino (White)**

Tall growing perennial clover; provides 100lb. nitrogen/acre when plowed in; sow 9 lb./acre or 2-5 lb./acre w/ other grasses. We stock uncoated seeds. To the best of our knowledge, organic certified seed is unavailable.

### **Clover, Dutch White**

Low growing perennial clover great for isle ways, lawns, and cover crop; sow 2-5 lbs./acre with other seed or 9 lbs./acre on its own; provides 100lb. nitrogen/acre when plowed in. We stock uncoated seed. To the best of our knowledge, organic certified seed is unavailable.

### **Hairy Vetch**

Extremely winter hardy and best legume for nitrogen fixation! Matures late spring, so choose hairy vetch when you are planting late spring crops (April / May). Sow 30-40 lb./acre or 25 lb./acre w/rye; fall. We typically stock untreated and organic certified seed.

### **Kale, Smooth/Spring**

Sow in either Spring or Fall for tasty, tender young leaves. Fall-seeded plots are moderately winter hardy and may continue to yield throughout winter if conditions are mild; severe cold may take out some plants. Sow 12# to the acre or 1/2# per 1,000 ft. sq. for wildlife/forage plots.

### **Oats**

2.5 lb./1000 sq.ft. or 100 lb. per acre when sown alone. 1-2 lb./1000 sq.ft or 50 lb./acre when sown with a legume. We typically stock untreated and organic certified seed.

### **Winter Wheat**

120 lb./acre; winter or spring. We typically stock untreated and organic certified seed.

### **Tillage Radish**

A brassica excellent at breaking up compacted soil & scavenging leached nitrate; produces biotoxins that help control soilborne pests and pathogens; provides weed control & may be mixed with winter grains; Sow at a depth of 1/4 - 1/2"; broadcast at 12-15 lbs./acre. We typically stock untreated seed and special order organic certified seed for those who need it.



### **Rapeseed**

Sow 8 lb/acre. An excellent brassica cover crop for sowing when you need to follow with an early spring crop. We stock untreated seed. To the best of our knowledge, organic certified seed is unavailable.

## **Warm Season Cover Crops**

All of our cover crop seeds are Non-GMO. The list of seeds below we feel is most applicable for crop producers. For a complete list of our annual cover crops and perennial forages as well as pricing, see our website and click on the link for **Warm Season Seed Pricing**.



### **Buckwheat**

Great early maturing cover crop and great for bees! Sow 3 lb./1000 sq. ft. or 130 lb./acre. We typically stock untreated and organic certified seed.

### **Millet, Browntop**

25 lb. per acre – This millet has many uses including wildlife forage plots, hay, seed production and erosion control. Browntop will grow 2-3 feet tall and produce seed in 50-60 days. Tolerant of drought, poor soil and able to withstand flooding (waterfowl habitat &/or hunting).

### **Millet, Japanese**

25 lb. per acre – Low growing grass cover that can be easily mowed. Good for temporary summer control of soil erosion if disrupting land. We stock untreated seed. To the best of our knowledge, organic certified seed is unavailable.

### **Millet, Pearl**

25 lb. per acre – A preferred summer grass cover for growers because of the large amount of biomass it produces. Typically pearl millet is sown with cowpeas for a complete cover. We have had a difficult time in recent years sourcing an untreated pearl millet. Most pearl millet seed comes treated with a fungicide. Check with us in the summer months to see if we've been able to source untreated seed. To the best of our knowledge, organic certified seed is unavailable.

### **Cowpea**

Great summer legume! Sow at 4 lb. per 1000 sq. feet or broadcast at 90 lb. per acre. We typically stock untreated seed. To the best of our knowledge, organic certified seed is unavailable. Current varieties on hand include IRON & CLAY and PINK EYE PURPLE HULL.

### **Sorghum Sudangrass**

Plant at 1/2"-1" depth; 10-20 lbs./acre in rows or 25-35 lbs./acre drilled or broadcast. This plant produces a fantastic amount of biomass. You will need to mow a couple of times to control or it will be nearly impossible to take down later. We stock untreated seed. To the best of our knowledge, organic certified seed is unavailable.

### **Sunflower, Perodovik**

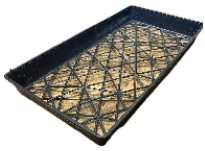
25 lb. per acre – This is a black oil sunflower, field variety. Sow at 8 lbs. per acre. We stock untreated seed. To the best of our knowledge, organic certified seed is unavailable.



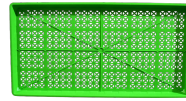
### **SunnHemp**

15-20 lb. per acre – Tall, quick growing, vigorous drought tolerant annual legume with tremendous biomass and nitrogen fixing potential. Use Guard-N inoculant with this seed to fix nitrogen. To the best of our knowledge, organic certified seed is unavailable.

# Seed Trays & Propagation Supplies



**Standard Web Tray, Black**



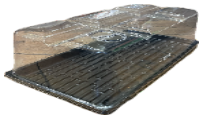
**Heavy Duty Mesh Tray**  
Asst. Colors



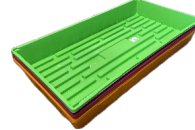
**Standard NCR Tray**  
Solid or Drainage Holes, 1020.



**Quad Thick Tray, Black**  
Heavy duty & long lasting, 1020.



**Tray Dome**  
2" & 7" Heights, 1020.



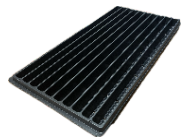
**Quad Thick Tray, Asst. Colors**  
Heavy duty & long lasting, 1020.



**Microgreen Tray, Black**  
1" depth, solid or drainage holes, 1020.



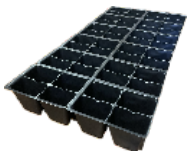
**Microgreen Tray, Multi-Color**  
Heavy duty, 1" depth, solid 1020.



**10 Row Tray**  
For dense seed sowing with limited growing media, 1020.



**Microgreen Insert**  
[801] Set of 8 perforated, large cells that fit 1020 trays, appropriate for microgreens and sprouts.



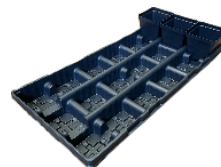
**1020 Seed Inserts (Perforated)**  
[606] 36 Cell (x6 6-packs)  
[1204] 48 Cell (x12 4-packs)  
[1206] 72 Cell (x12 6-packs)



**Plug Trays (NOT Perforated)**  
50 Cell, 72 Cell,  
128 Cell, 288 Cell



**Square Plastic Pots**  
3"  
3.5"  
4.5" Tall



**Square Pots Trays**  
Tray for 3" Pots - Fits 32 Pots  
Tray for 3.5" Pots - Fits 18 Pots  
Tray for 4.5" Tall Pots - Fits 12 Pots

## Nursery Trade Pots



Cylindrical planting pots for nursery work.  
Available sizes include: 1, 2, 3, 5, and 7 Gallons.

## Heat Mats



Get a head start on your seed germination by setting your seed trays on a heat mat! Available in single and .

# Drip Tape & Irrigation

## Solid Poly Tubing

(Black or white, supply varies)

1/8" x 100	1/4" x 100'
1/2" x 50'	1/2" x 100'
1/2" x 500'	3/4" x 100'
3/4" x 500'	1" x 100'
1" x 250'	1" x 500'

## Tubing with Emitters

1/4" x 100' micro line  
12" spacing

1/2" x 100' poly drip line  
12" spacing

Filters 3/4" OR 1"

## Toro Aqua-Traxx Drip Tape

mil	Length	Drip Spacing
8 mil	2000' OR 7500'	4", 8", OR 12"
10 mil	6000'	8" OR 12"
15 mil	1000' OR 4000'	8" OR 12"

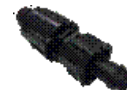
## Drip Tape Fittings



**10 PSI Regulator**  
**SKU 9442**  
3/4" fitting.



**Shut-off Valve**  
**w/ Locking Nut**  
**SKU 11103**



**Tape-to-Header Adapter**  
**SKU 9446**



**15 PSI Regulator**  
**SKU 19844**  
3/4" fitting.



**Tape Coupling**  
**SKU 9445**



**Tape Elbow**  
**SKU 9459**

## 1/2" Line Fittings



**17mm Elbow**  
**SKU 9473**



**Shut-Off Valve**  
**17mm**  
**SKU 9469**



**Shut Off Valve**  
**SKU 11899**  
17mm to Header



**17mm to End Cap**  
**SKU 9465**



**17mm Figure Eight**  
**SKU 9464**



**Tee 17mm**  
**SKU 9472**



**Coupling 17mm**  
**SKU 9471**



**17mm to Header**  
**SKU 9474**



**Regulator to 17mm**  
**SKU 9467**



**Flushing End Cap**  
**SKU 9466**

### ***3/4" Line Fittings***



**35 PSI Regulator 3/4"  
SKU 9441**



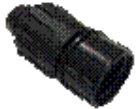
**3/4" Coupling  
SKU 10570**



**3/4" Elbow  
SKU 9818**



**Flushing End Cap  
SKU 9466**



**3/4" to Pressure Regulator  
SKU 9481**



**3/4" Tee  
SKU 9475**

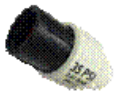


**3/4" Shut-Off Valve  
SKU 9470**



**3/4" to End Cap  
SKU 9479**

### ***1" Line Fittings***



**35 PSI  
Press. Regulator 1"  
SKU 9484**



**1" Insert Coupling  
SKU 10572**



**1" PVC to 1" Powerloc  
SKU 10577  
Glue to PVC**



**1" Insert Tee  
SKU 9490**



**3/4" Female to 1" Powerloc  
SKU 10575**



**3/4" Male to 1" Powerloc  
SKU 10576**



**1" Insert Elbow  
SKU 10573**



**1" Male to 1" Powerloc  
SKU 10574**



**1" Figure Eight  
SKU 19937**

## **Microfittings & Emitters**



**Sprinkler Stake**  
**SKU 9452**  
Spaghetti Tubing



**Male Adapter**  
**SKU 9486**  
For micro tubing.



**Micro Shut-Off Valve**  
**SKU 9487**



**Sprinkler Weight**  
**SKU 19803**  
For suspended misters; snaps on.



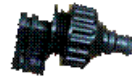
**0.5 GPH Emitter**  
**SKU 9436**



**Female Barb**  
**SKU 9450**  
For micro tubing.



**Misting Sprinkler**  
**SKU 9454**  
Green or purple, for seed germination.



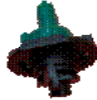
**Wobbler**  
**SKU 19800**  
10-12' spacing



**1.0 GPH Emitter**  
**SKU 9437**



**1/4" Barbed Coupling for Micro Line**  
**SKU 17446**



**Mini Compact Sprinkler, 16' Radius**  
**SKU 22045**  
Space 8' apart; hang or mount on risers



**18" Clip Stake**  
**SKU 19804**  
For wobblers; can be inserted into 1/2" PVC risers.



**Mister / Sprinkler Stake**  
**SKU 9456**



**1/4" Elbows, Tees**  
**SKU 008**



**Non-Drip Valve**  
**SKU 22044**  
Opens at 21.7 psi.  
Prevents drip on hanging sprinklers



**Micro Sprayer**  
**SKU 19797**  
Larger droplet spray, can be on riser. 6-8' Spacing.

## **Miscellaneous Repair & Maintenance**



**Key Tool**  
**SKU 19801**  
All purpose tool for irrigation maintenance.



**Goof Plug Large**  
**SKU 9444**  
Individual plugs.



**Goof Plug 1/4"**  
**SKU 9443**  
Small, pack of 10.



**Hose Clamp**  
**SKU 18515**  
1" - 1 3/4"



**Teflon Thread Tape**  
**SKU 13673**



**Backflow Preventer**  
**SKU 9819**





*helping you grow since 1993*

(919) 542-3353  
101 S. Small St.  
Pittsboro, NC 27312

**Store Hours**

**Monday - Friday**

8 AM - 5:30 PM


**Saturday**


8 AM - 3:00 PM

**Sunday**

CLOSED

 [chathamfarmsupply.com](http://chathamfarmsupply.com)

 [@country\\_farm\\_home](https://www.instagram.com/country_farm_home)

 [facebook.com/CountryFarmandHomeNC](https://www.facebook.com/CountryFarmandHomeNC)